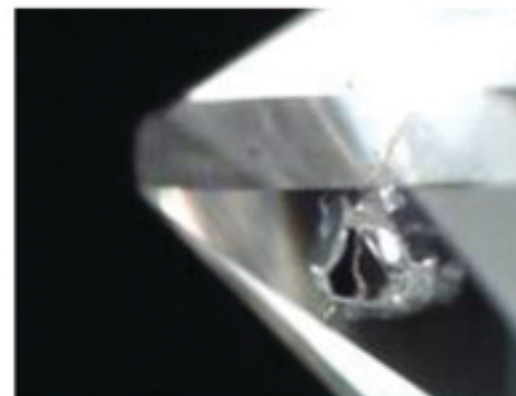
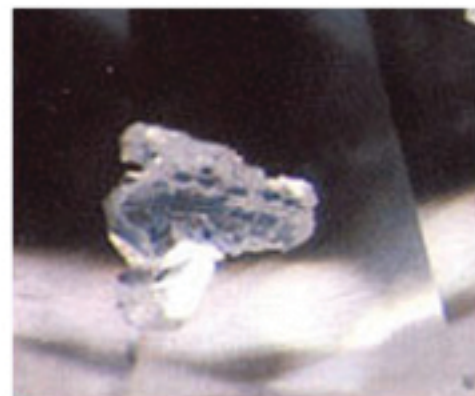


KNOT

A "knot" is an included diamond crystal that extends to the surface of the diamond. In other words, it is a diamond crystal which reaches the polished surface of a finished diamond. With proper lighting and magnification you may be able to see the boundary between the knot and the diamond which contains it. Knots sometimes resemble raised areas on a facet surface or group of facets. Differences in the polish quality may be visible on the surface of the knot and the facet where it is located. We typically reject diamonds for this characteristic because we feel that knots provide a potential durability risk to the longevity of the diamond. The first picture below shows a knot as seen through our Gem Scope using a normal light source; we diffused the light source for the second picture to provide you with a different perspective of the inclusion.



CODE	DESCRIPTION
Y – YES	KNOT is present in diamond.