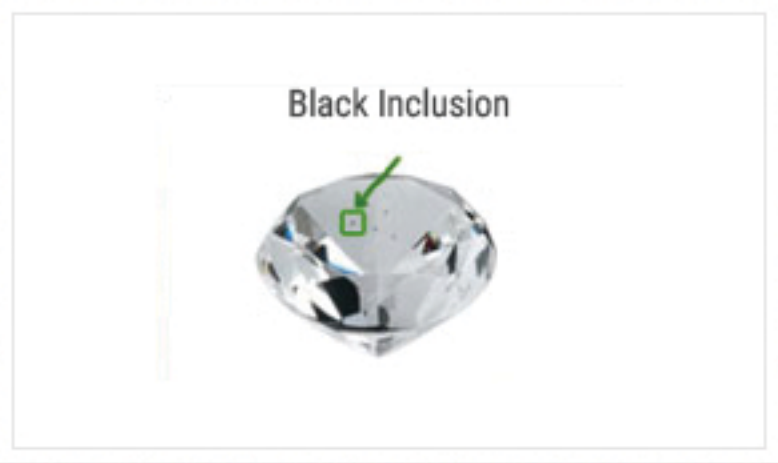


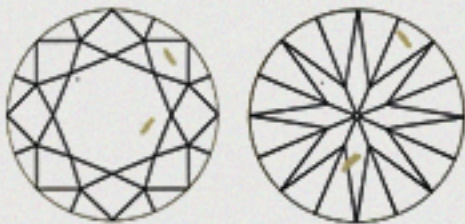
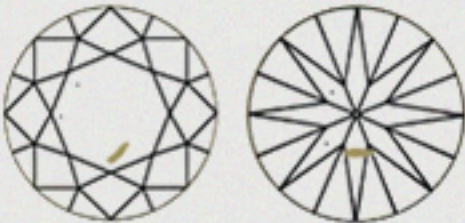
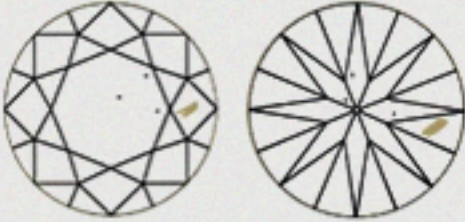
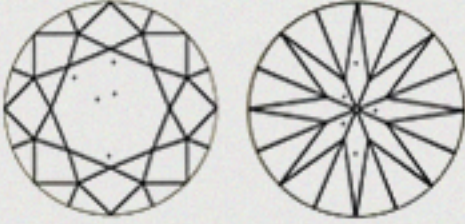
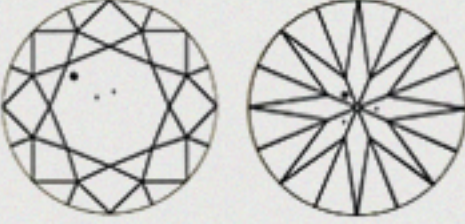


BLACK INCLUSION PROPORTION: NATTS (BI)

This term is used to indicate the amount of black inclusions as compared to the total inclusions in the diamond. This is sub divided in two parts 1: BIC = BLACK IN CENTER ,2: BIS = BLACK IN SIDE

Black Inclusion On Center (BIC)



CODE	DESCRIPTION	IMAGE WHITE INCLUSIONS  BLACK INCLUSIONS 
B0-NOT VISIBLE	This black inclusion is not easily visible and it is dependent on the clarity grade.	
B1-MINOR	There is a Slight presence of black inclusion. This inclusion is partially visible and it is dependent on the clarity grade.	
B2-MEDIUM	There is moderation of black inclusion. This inclusion is easily visible and it is dependent on the clarity grade.	
B3-MAJOR	Black inclusion is found in abundance. These inclusion are very easily visible and it is dependent on the clarity grade. They affect the pricing of the diamond extensively.	
B4-HEAVY	Black inclusions are plenty and are clearly visible. They are instrumental in pricing of the diamond.	

These ratings are dependent on the maximum Black inclusions for every diamond in each clarity grade and are visible with 10X magnification